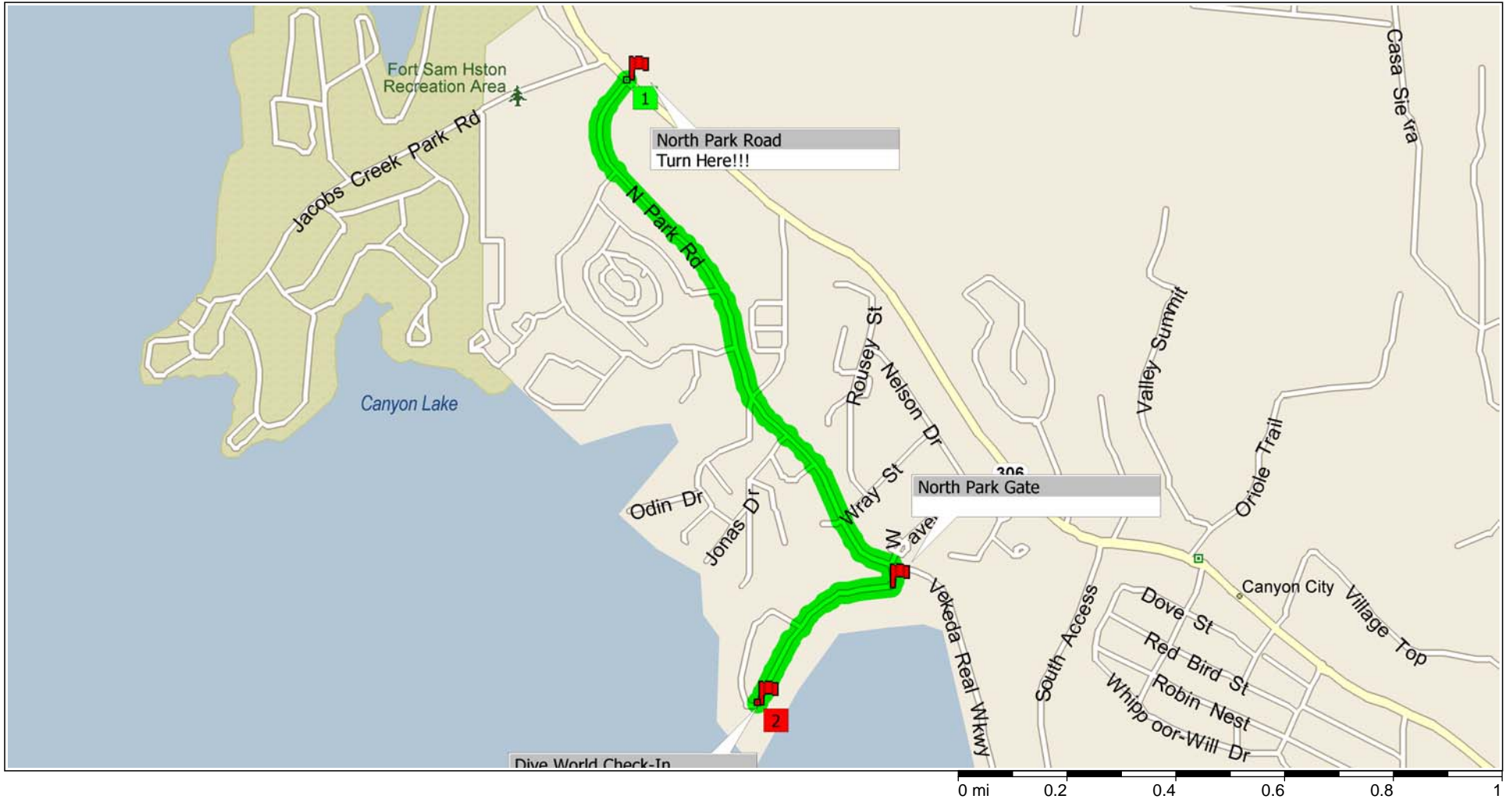
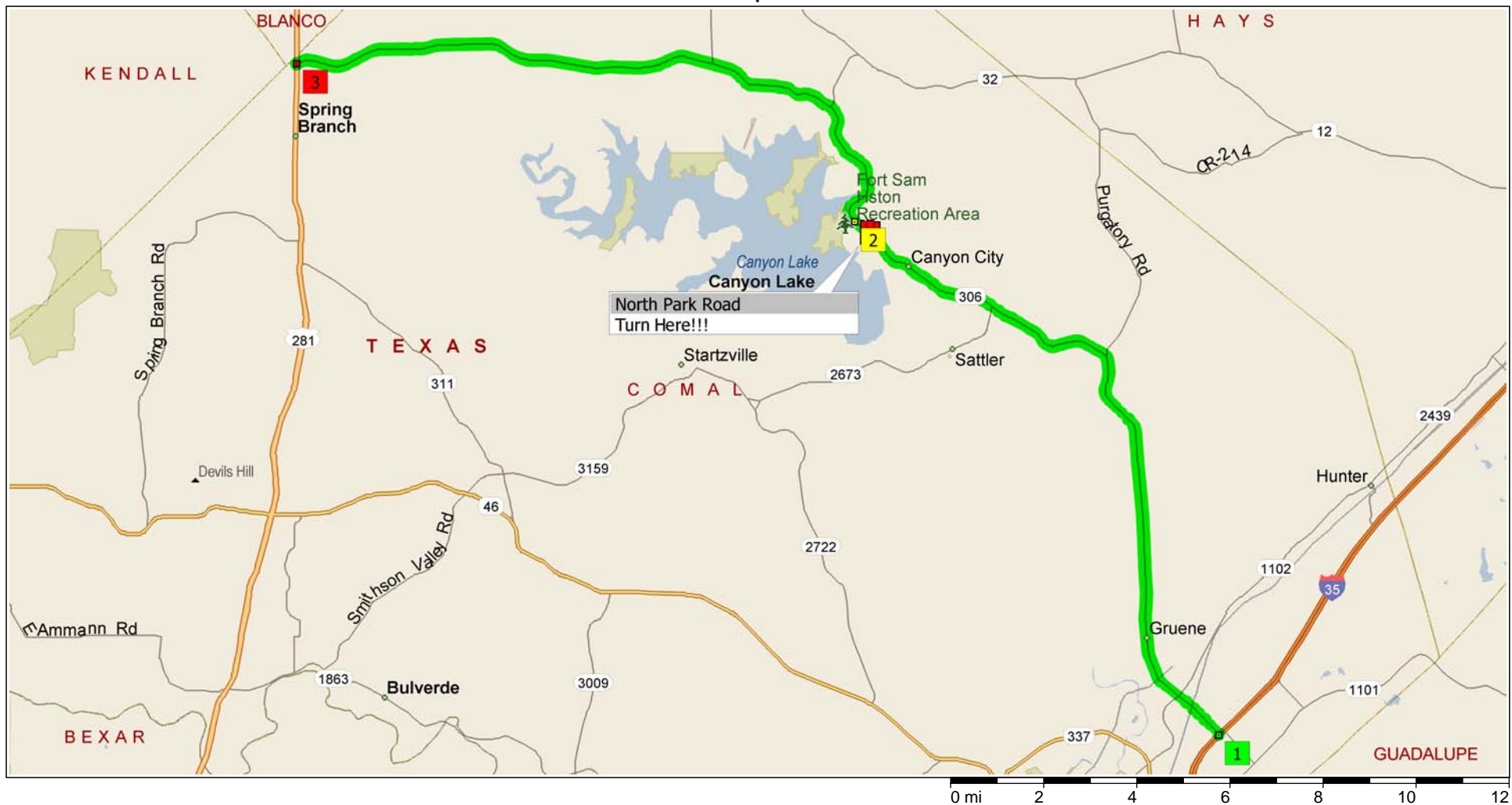


# north park



TURN-BY-TURN DIRECTIONS CAN BE FOUND ON PAGE 3 OF THIS DOCUMENT.

# north park 2



MAP TO SKYLINE BOAT RAMP

281 North approximatel 21 miles to the Boerne-New Braunfels (Canyon Lake) HWY 46 Exit. Turn right on Hwy 46 and go approximately 4 miles to FM 3159 (to Startzville). Turn left on FM 3159 and go approximately 7 miles to FM 2673. Turn Right on FM 2673 (going towards Sattler) and go approximately 4 miles. Turn left on Triple Peak (by Shores and Village Lakes Sing) go about 2/10 mile, turn right by Warehouses. Turn left on Skyline and then left on Boat Ramp and your there!!!!!!!

NORTH PARK, CANYON LAKE

North Park is a dive location used by many divers. Weekends tend to be crowded, while weekdays are slow. From San Antonio, the easiest way to North Park is to take 35 North to the Canyon Lake (HWY 306W) Exit. Follow 306 through Canyon City. Turn Left at the second blinking yellow light to North Park.

